

# Fortitude Birdlip Hill, Witcombe, Cheltenham, GL3 4SN

Sold @ Auction £850,000



- FOR SALE BY ONLINE AUCTION
- WEDNESDAY 17TH SEPTEMBER 2025
- VIRTUAL TOUR NOW ONLINE
- VIEWINGS – REFER TO DETAILS
- LEGAL PACK COMPLETE
- SOLD @ SEPTEMBER LIVE ONLINE AUCTION
- FREEHOLD 7.7 ACRE PLOT
- PLANNING GRANTED | LARGE DETACHED HOME
- ALTERNATIVE PLANNING | 10 X LOG CABINS
- EXTENDED 8 WEEK COMPLETION

Hollis Morgan – SEPTEMBER LIVE ONLINE AUCTION – A Freehold elevated and mature 7.7 ACRE BUILDING PLOT with PLANNING GRANTED to erect a DETACHED CONTEMPORARY HOME ( 7,430 Sq Ft ) with outstanding RURAL VIEWS.

# Fortitude Birdlip Hill, Witcombe, Cheltenham, GL3 4SN

## Accommodation

**FOR SALE BY LIVE ONLINE AUCTION**  
**\*\*\* SOLD @ SEPTEMBER LIVE ONLINE AUCTION \*\*\***

GUIDE PRICE £800,000 +++  
 SOLD @ £850,000

ADDRESS | Fortitude, Birdlip Hill, Witcombe, Cheltenham GL3 4SN

Lot Number 24

The Live Online Auction is on Wednesday 17th September 2025 @ 17:30  
 Registration Deadline is on Monday 15th September 2025 @ 16:00

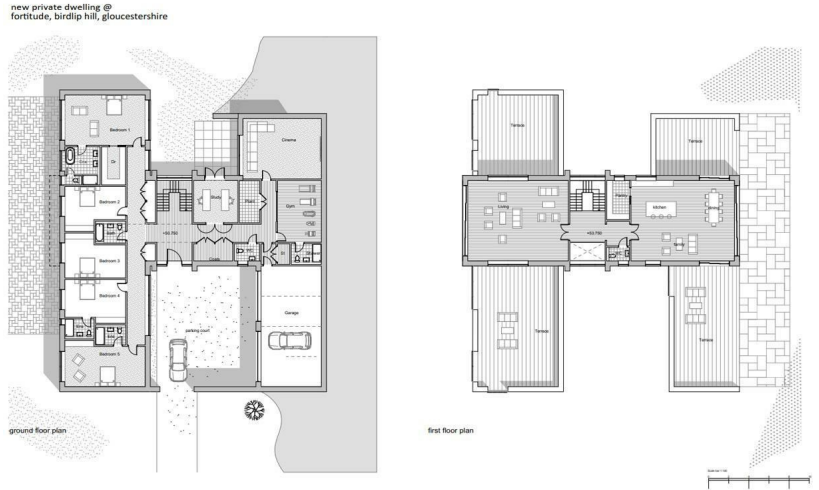
The Auction will be streamed LIVE ONLINE via the Hollis Morgan website & you can chose to bid by telephone, proxy or via your computer. Registration is a simple online process – please visit the Hollis Morgan auction website and click “REGISTER TO BID”

**JOINT AGENTS**  
 Bruton Knowles

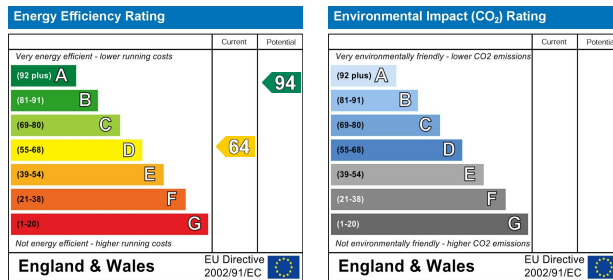
**THE SITE**  
 Fortitude is set in an elevated position on Birdlip Hill, with rural views extending to the north and west. The site is accessed via a private gated entrance and comprises two adjacent fields formerly in agricultural use, totalling 7.7 acres ( 3.12 ha ). We understand that electricity, water and drainage services have been installed and a landscaped pond has been created towards the north western corner of the site. The majority of the site is laid to grass, an electric substation is positioned to the north eastern boundary and an electricity line crosses the south eastern portion of the site on timber posts. The southern field is predominantly grazing land with an area of hardstanding towards the northern point of the field. The northern field has a medium gradient, rising to a steep gradient in the southern field. The boundary is generally formed by post and wire agricultural fencing, with timber fencing either side of the entrance gate. Sold with vacant possession.

Tenure - Freehold  
 EPC - D

## Floor plan



## EPC Chart



9 Waterloo Street  
 Clifton  
 Bristol  
 BS8 4BT  
 Tel: 0117 973 6565  
 Email: post@hollismorgan.co.uk  
 www.hollismorgan.co.uk

Hollis Morgan Property Limited, registered in England, registered 7275716.  
 Registered address, 5 Upper Belgrave Road, Clifton, Bristol BS8 2XQ

## Auction Property Details Disclaimer

Hollis Morgan endeavour to make our sales details clear, accurate and reliable in line with the Consumer Protection from Unfair Trading Regulations 2008 but they should not be relied on as statements or representations of fact.

Please refer to our website for further details.